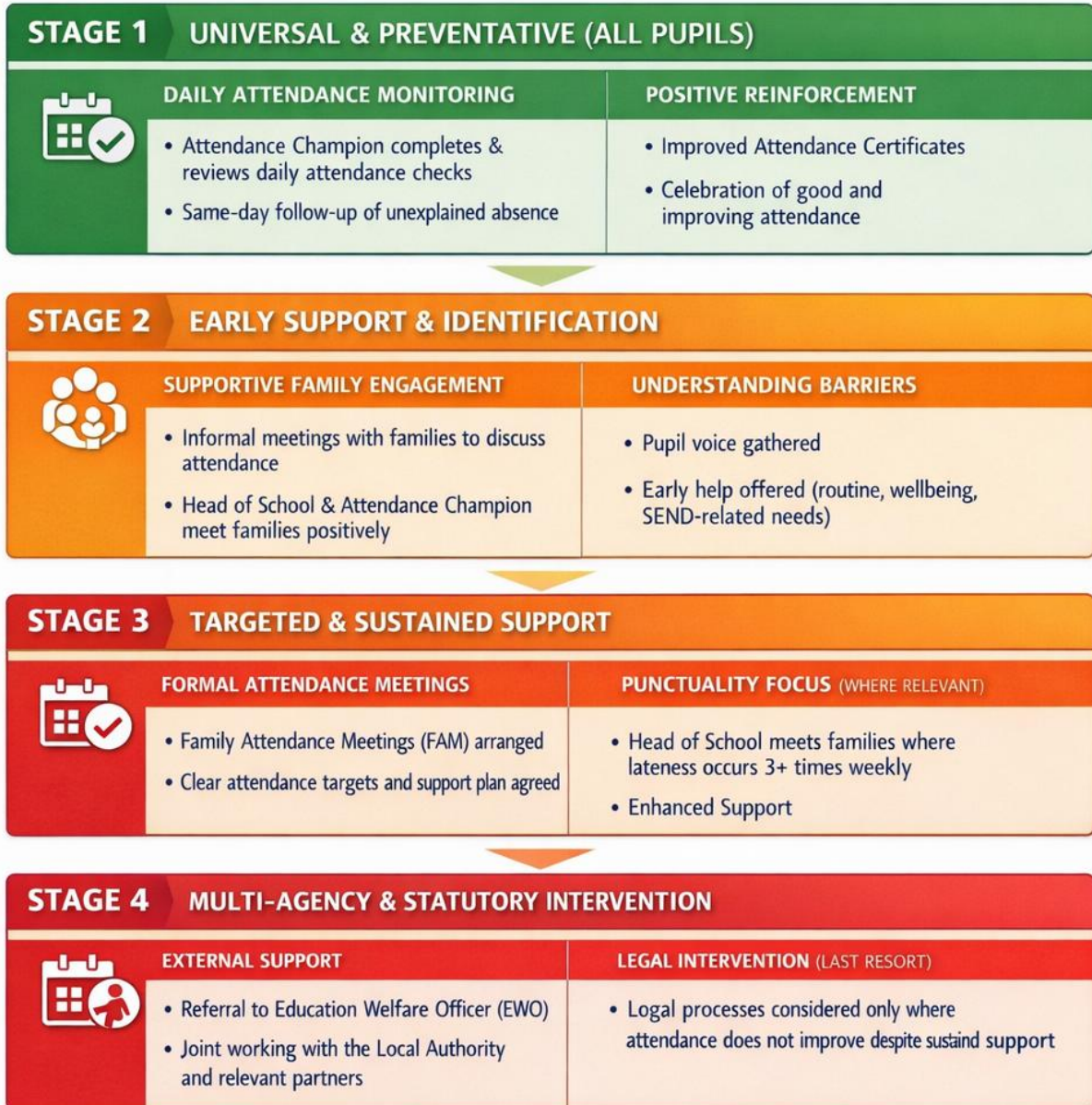


# YEW TREE COMMUNITY SCHOOL

## ATTENDANCE PROCEDURE

SUPPORT FIRST • GRADUATED RESPONSE • ESCALATION ONLY IF NECESSARY



**Guidance Reference:** Based on *Working together to improve school attendance* (Department for Education statutory guidance, updated August 2024).

